

SSRS SSL Certificates

Here's some notes on how to add an SSL certificate to SSRS.

Certificate Conversion

When importing an SSL certificate (cer) with a separate private key (key), it needs to be in PFX format, for Windows to accept it.

Follow this page to convert a key and cer pair to pfx: [Create PFX Cert File \(for IIS\)](#)

The conversion is pasted, here, for clarity:

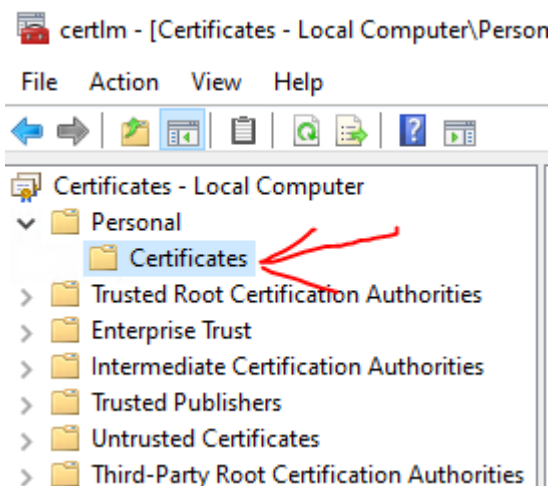
```
"C:\Program Files\Git\usr\bin\openssl.exe"  
pkcs12 -export  
-out myhostname.companyname.com-cert.pfx  
-inkey myhostname.companyname.com.key  
-in myhostname.companyname.com.cer
```

NOTE: The above is displayed on multiple lines for readability.
To execute, it must be all on one line.

Import to Cert Store

Once the PFX is generated, you can import it to the Windows Certificate Store.

For SSRS, import the pfx file to the Local Machine/Personal folder of the certificate store.



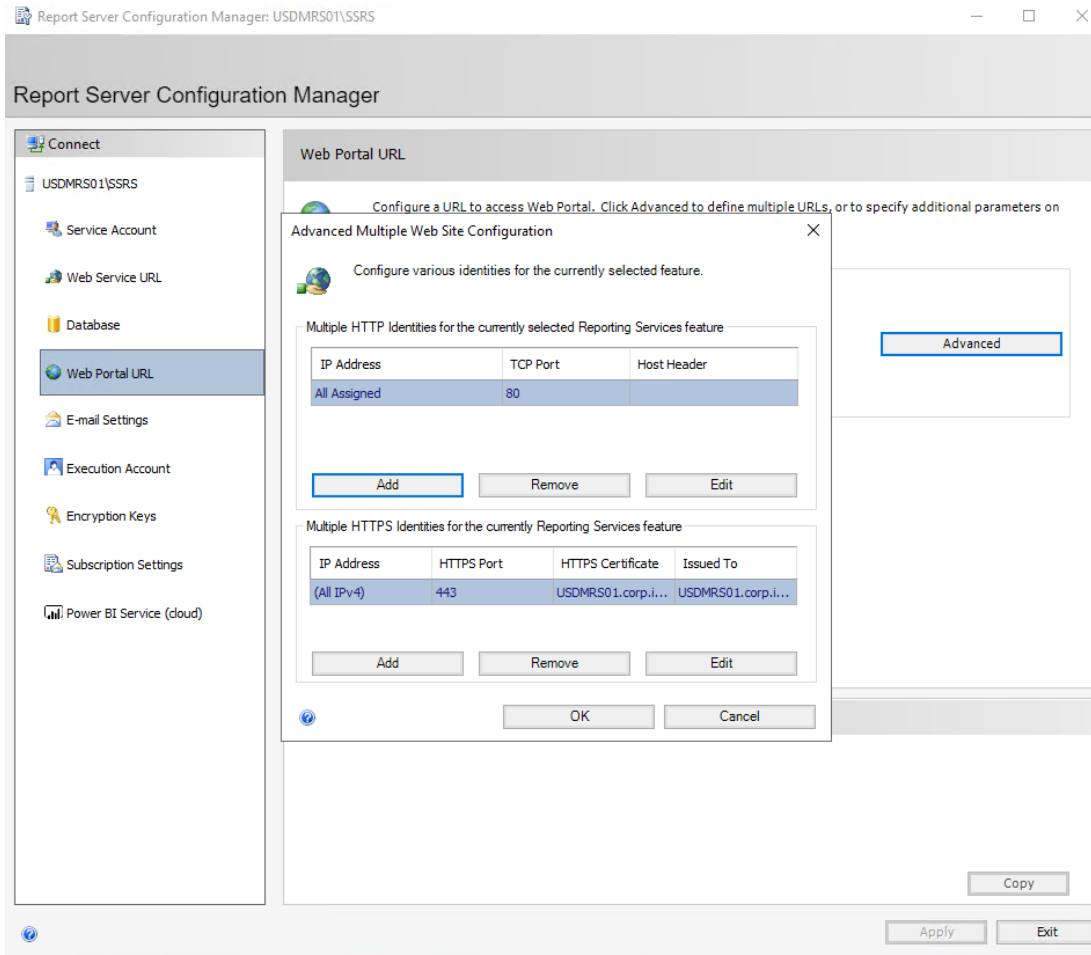
Certificate Binding

Once the certificate is in the store, you can bind it in SSRS.

Open the Report Server Configuration Manager from the Start menu.

From the left tree, click on Web Portal URL.

Click the Advanced button, and locate the lower pane for https bindings.



Remove any existing SSL binding, by selecting it and hitting Remove.

The old binding may not successfully delete.

So you can open an elevated command line, and delete the old cert binding, with this:

```
netsh http delete sslcert ipport=0.0.0.0:443
```

Return to the Report Server Configuration Manager, and add the new cert binding.

Select the imported certificate (from earlier), and bind it to port 443.

NOTE: Both Web Service URL and Web Portal URL must have the same origin.
So, be sure to do the same addition to the Web Service URL tab.

You should be able to access the report server URL.

Revision #1

Created 19 August 2025 16:40:01 by glwhite

Updated 1 September 2025 05:18:55 by glwhite